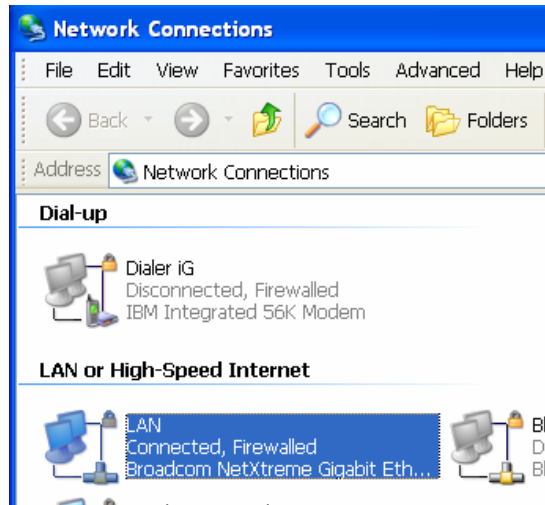


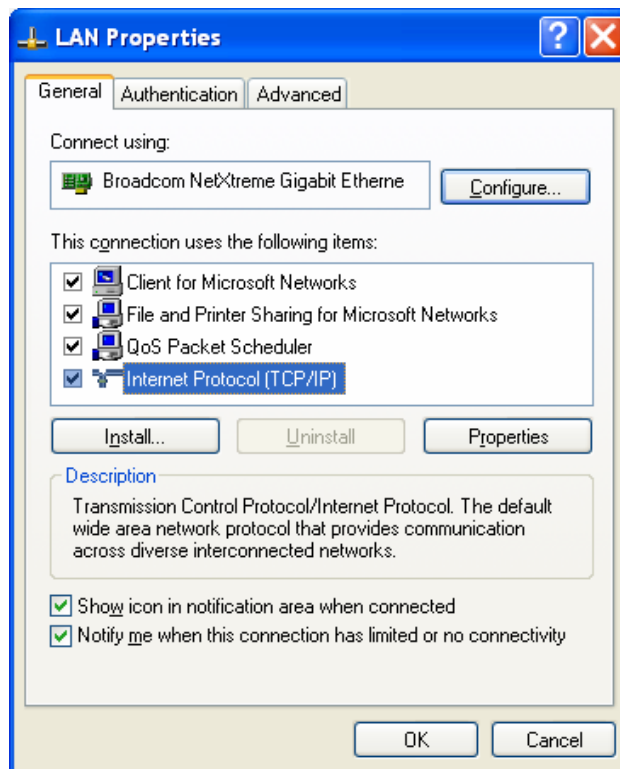
# TECHNICAL BULLETIN 44

## Flashing Procedures for LANLink (Digi Module)

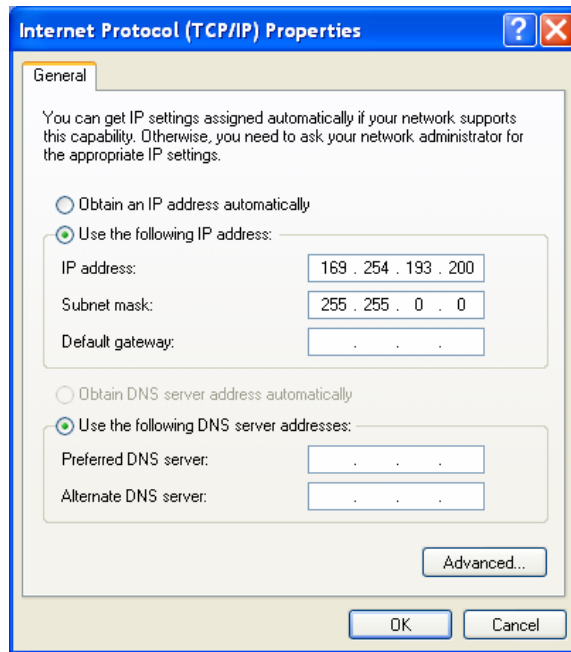
1. Open the Network Connections and select properties for your LAN connection



2. Select Internet Protocol (TCP/IP) and click the Properties button

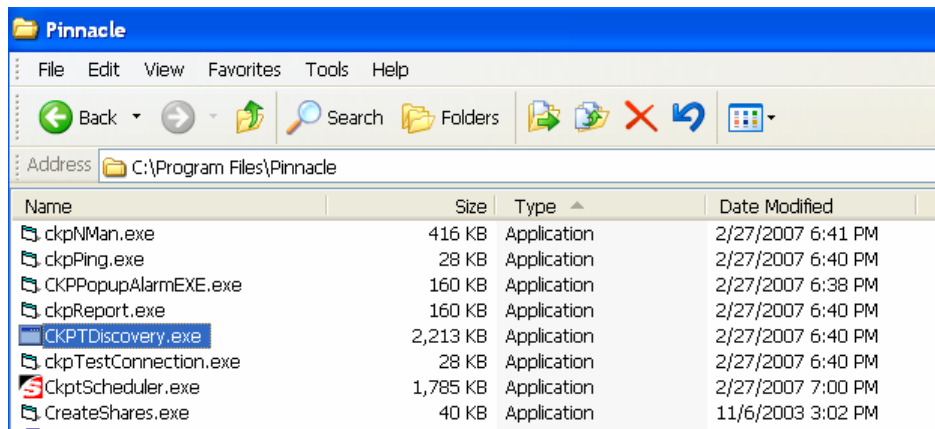


3. Click on "Use the following IP address"
4. Set the IP Address: 169.254.193.200 and Subnet mask: 255.255.0.0
5. Click the OK button

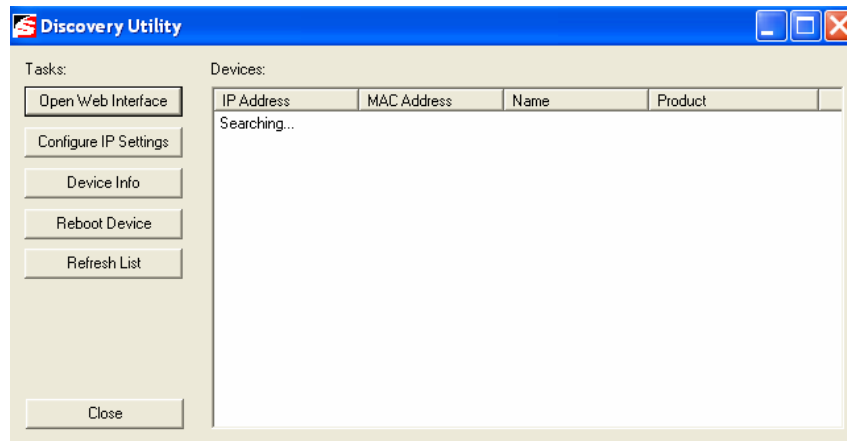


6. Connect straight to the LANLink using an Ethernet Cable (Cat5) from the computer to the LAN Link Module in the AC-1200 Backplane, do not connect to a Network.
7. Power the AC-1200.
8. Go to the directory were Pinnacle was installed. Default location is c:\program files\pinnacle and "run" CKPTDiscovery.exe.

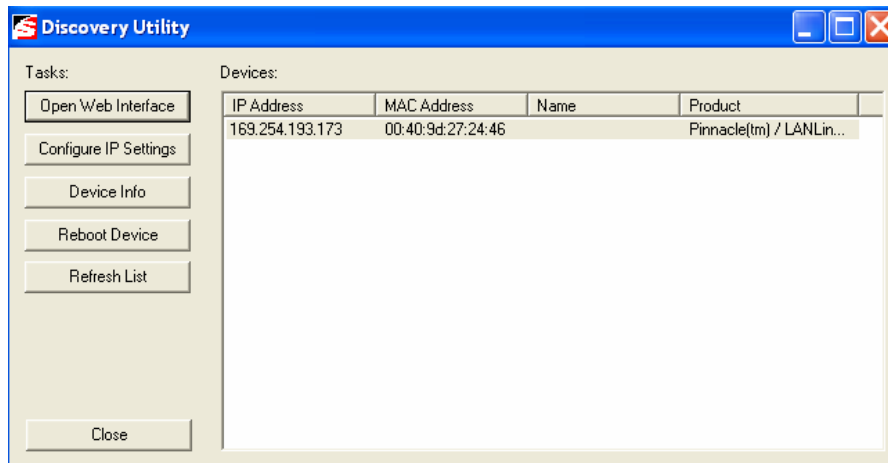
**Note: Allow the LANLink to boot (1 minute) before you run CKPTDiscovery.exe.**



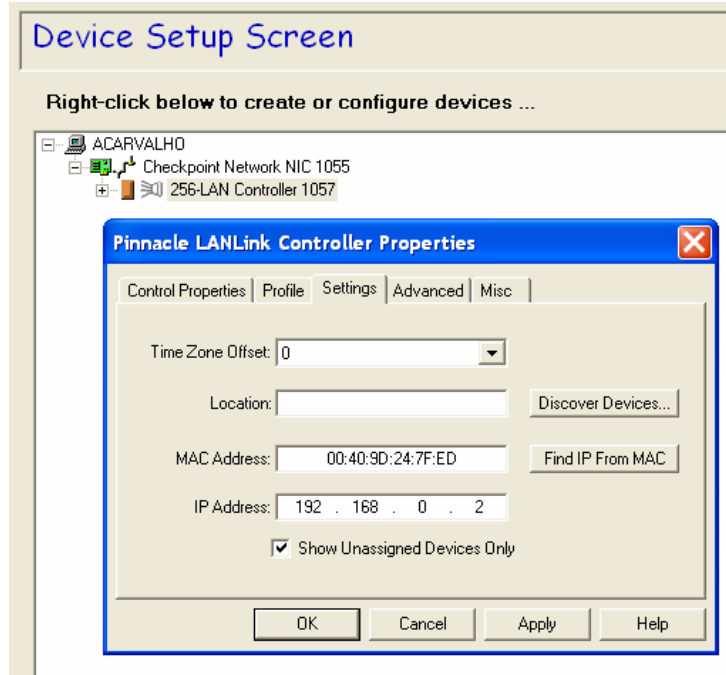
The Discovery Utility main screen will be displayed.



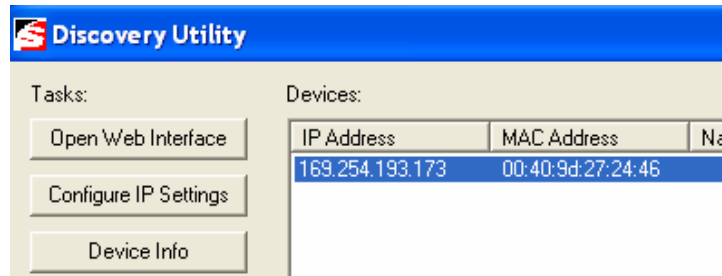
9. The IP addresses of the LANLink should appear.



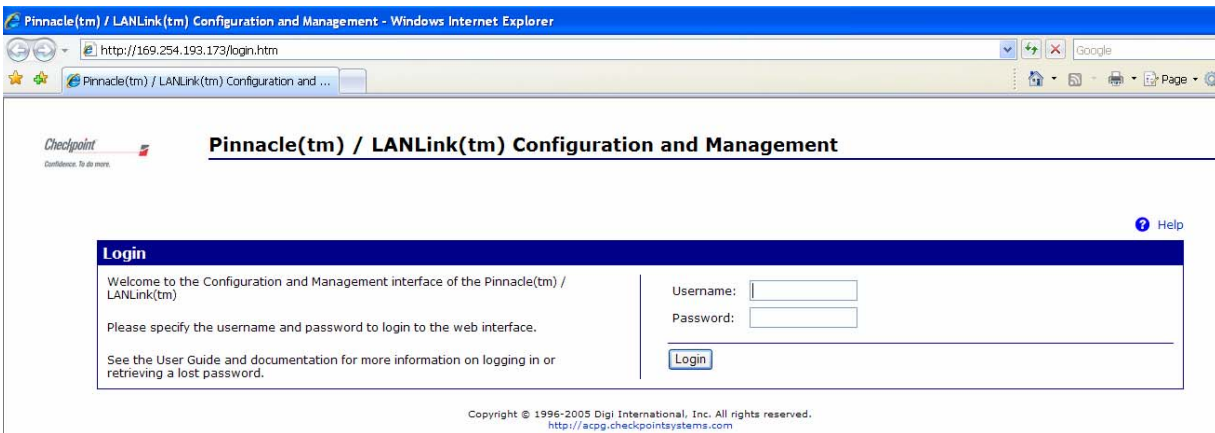
**Note: If Discovery Utility does not find the LANLink try rebooting the device by recycling power. As an alternative you may try running Pinnacle and go to Devices Setup and click on "Discover Devices" from the Settings tab under the Properties of 256-LAN Controller Device Setup Screen (see below)**



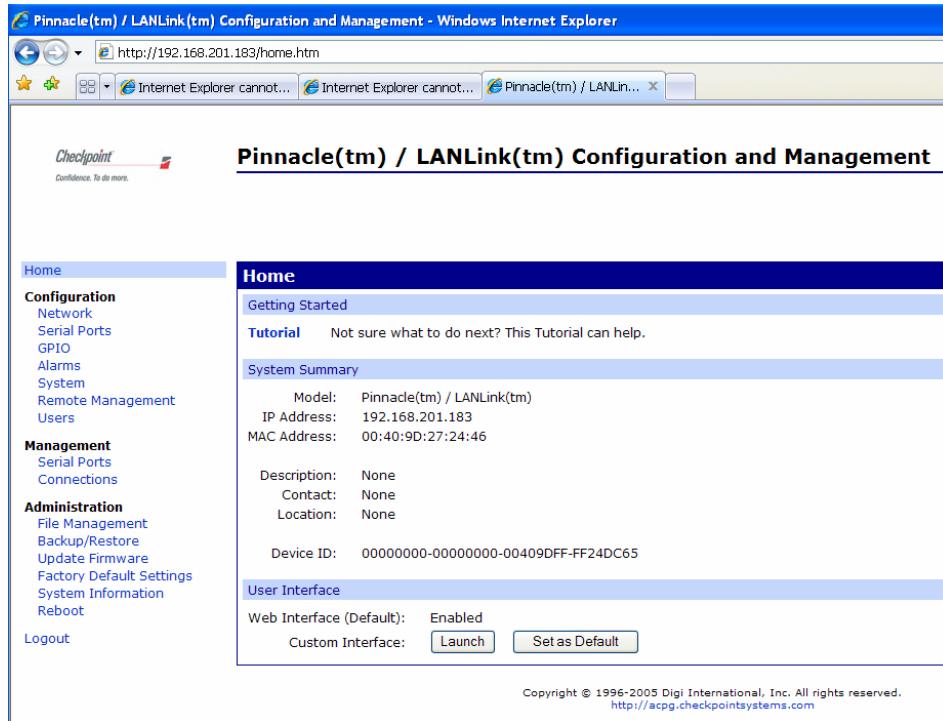
10. Highlight the IP address you want to configure.



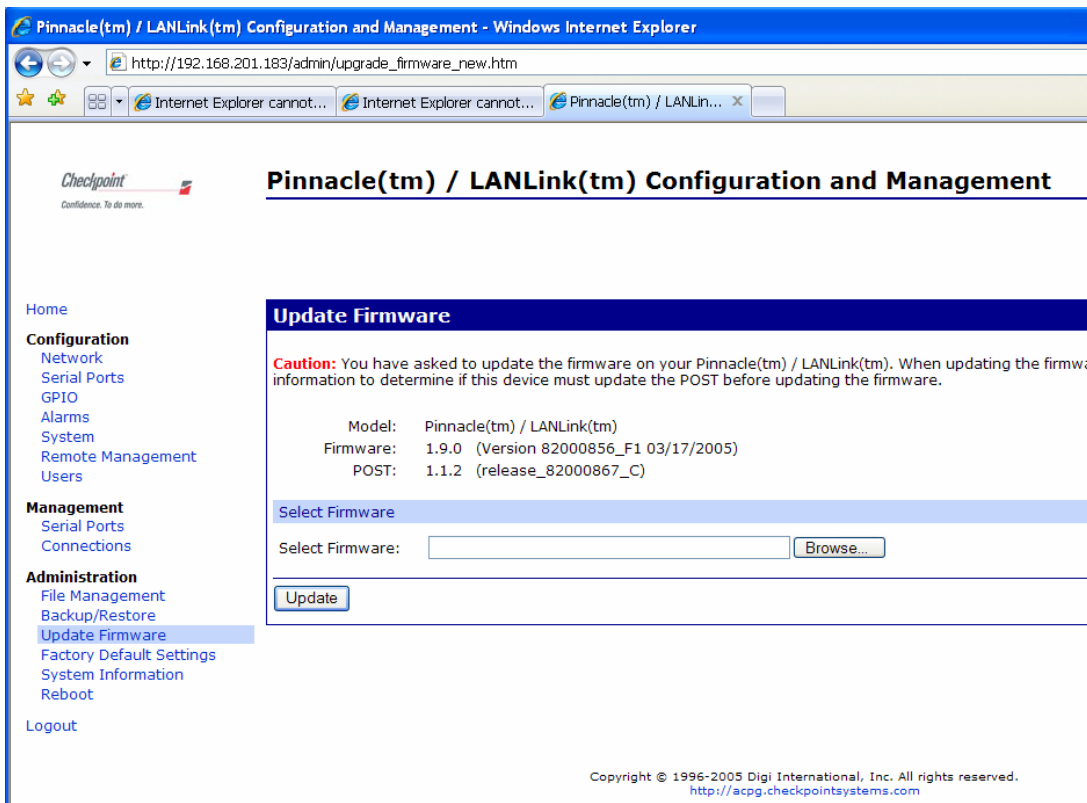
11. Click on the "Open Web Interface" button.



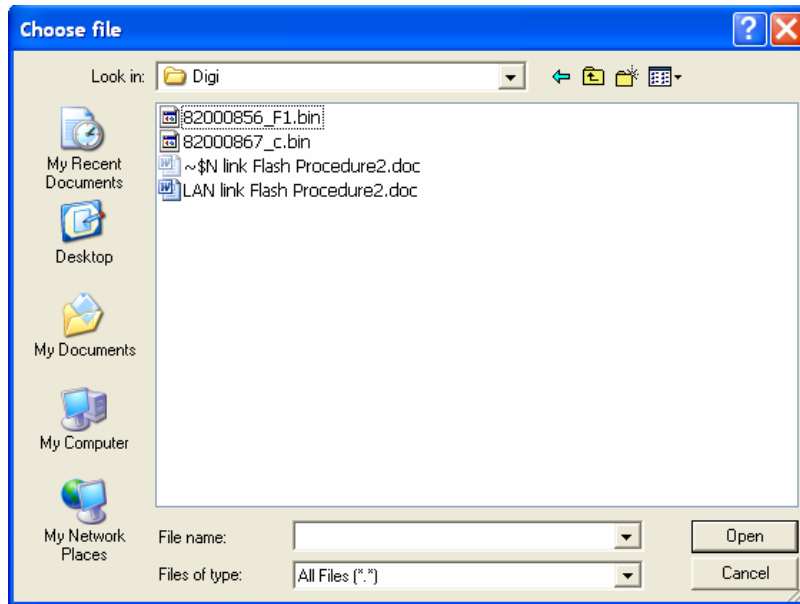
12. On the Login screen enter the Username: **root** and Password is: **dbps** and click the Login button.



13. Under Administration menu on the left click on "Update Firmware".



14. On the screen click on Browse button then go to the location where you stored the Digi firmware files (82000856\_F1.bin and 82000867\_c.bin).



15. First "Update" the POST by selecting file **82000867\_c.bin** then click the "Update" button. **(Never update the Firmware first!)**

Home

**Configuration**

- Network
- Serial Ports
- GPIO
- Alarms
- System
- Remote Management
- Users

**Management**

- Serial Ports
- Connections

**Administration**

- File Management
- Backup/Restore
- Update Firmware**
- Factory Default Settings
- System Information
- Reboot

Logout

### Update Firmware

**Caution:** You have asked to update the firmware on your Pinnacle(tm) / LANLink(tm). When information to determine if this device must update the POST before updating the firmware

Model:	Pinnacle(tm) / LANLink(tm)
Firmware:	1.9.0 (Version 82000856_F1 03/17/2005)
POST:	1.1.2 (release_82000867_C)

Select Firmware

Select Firmware:

Wait until the update is completed!

Home

**Configuration**  
Network  
Serial Ports  
GPIO  
Alarms  
System  
Remote Management  
Users

**Management**  
Serial Ports  
Connections

**Administration**  
File Management  
Backup/Restore  
Update Firmware  
Factory Default Settings  
System Information  
Reboot

Logout

### Update Firmware

**Caution:** You have asked to update the firmware on your Pinnacle(tm) / LANLink(tm). information to determine if this device must update the POST before updating the firm

Model:	Pinnacle(tm) / LANLink(tm)
Firmware:	1.9.0 (Version 82000856_F1 03/17/2005)
POST:	1.1.2 (release_82000867_C)

Select Firmware

Select Firmware:  

Update in progress. Please wait...

16. Then click the Reboot button.

Home

**Configuration**  
Network  
Serial Ports  
GPIO  
Alarms  
System  
Remote Management  
Users

**Management**  
Serial Ports  
Connections

**Administration**  
File Management  
Backup/Restore  
Update Firmware  
Factory Default Settings  
System Information  
Reboot

Logout

Firmware has been successfully updated.  
You must reboot to load this new firmware.

### Reboot

The reboot process will take approximately 1 minute to complete. Click Reboot now to reboot the Pinnacle(tm) / LANLink(tm).

The "Reboot may take 1 minute", wait for the automatic reconnection. If the auto reconnection does not happen after 1 minute, re-run Discovery Utility or click on the "Refresh List" button if Discovery Utility is running.

### Reboot In Progress

The Pinnacle(tm) / LANLink(tm) with MAC address 00:40:9D:27:24:46 is currently rebooting. You will be reconnected automatically in approximately 1 minute.

With DHCP currently enabled, a new IP address could be assigned automatically by the DHCP server. If this happens and the reconnect fails, please use the setup wizard or discovery utility that was provided on your CD to find this device.

If you are not reconnected automatically [click here](#) .

17. Repeat steps 9 thru 16 to Upload the Firmware

### Update Firmware

**Caution:** You have asked to update the firmware on your Pinnacle(tm) / LANLink(tm). When updating, please refer to the following information to determine if this device must update the POST before updating the firmware.

Model: Pinnacle(tm) / LANLink(tm)  
Firmware: 1.9.0 (Version 82000856\_F1 03/17/2005)  
POST: 1.1.2 (release\_82000867\_C)

Select Firmware

Select Firmware:

\* This process takes approximately 9 minutes.