

LANLink™ Ethernet-Ready Controller Series



**LANLink M1200
Eight-Reader Controller**



**AC-1200
I/O Controller**



Add up to four I/O Controllers
(one for each TC)

LANLink™ Controller Series

LANLink is an IP-based access control and event management controller. Building off of Sielox's highly successful 32-bit AC-1200 and AC-1208 serial-based controllers, LANLink delivers unmatched modularity, supporting installations from a single reader to an enterprise-wide system.

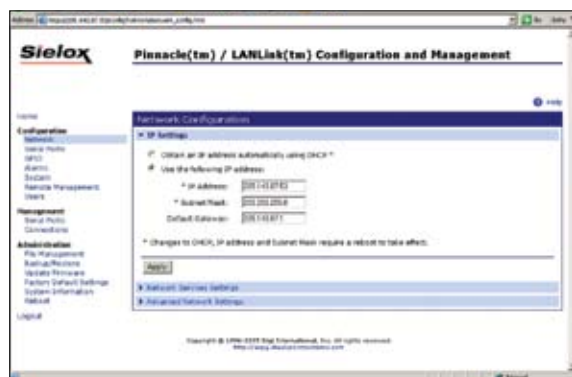
LANLink M1200 is offered in two starting configurations: the first is an eight-reader controller with up to four optional I/O panels; the second is a two-reader I/O controller, for a mixture of reader and I/O support on a single back-plane. The **LANLink M1208** provides two-reader and four-reader offerings in a more compact format.

Features:

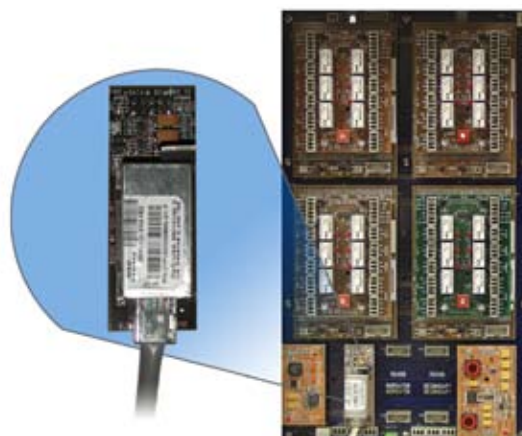
- **10 Base-T, 100 Base-T, or 10/100 Base-T communications** with Sielox's Pinnacle™ Access Control and Event Management System platform
- **IP-addressable** for use in LAN, Intranet, or Internet (WAN) configurations
- **2- to 16-reader configurations** per enclosure, leveraging the modularity of the AC-1200 and AC-1208 backplane formats
- **Flat architecture** integration eliminates the need for the AC-900 Main Controller
- **DHCP** support eases installation: leased IP addresses are assigned automatically
- **Secure communications** via 3DES 168-bit encryption
- **Local (server-independent) anti-passback** per Terminal Controller and **server based global and soft anti-passback** for up to 20 location-independent Terminal Controllers (40 readers each) per defined zone, each independent of location¹
- **Mixed LAN- and serial-supported installations** allow additions to the existing Pinnacle system
- **Web-based diagnostics** for IP controller analysis from any networked computer

¹ Not supported when using the AC-900 main controller for regional anti-passback

Easy setup using Pinnacle and web-based LANLink controller utilities



LANLink's Ethernet module enables direct TCP communications



LANLink™

Ethernet-Ready Controller Series

Product Specifications

General

Backplane Dimensions	M1200: 14.95" x 8.60" (37.9 cm x 21.8 cm) M1208: 10.50" x 8.65" (26.7 cm x 21.9 cm)
Power Requirements	11.5VDC min/18VDC max, 5 amps (each backplane) 3.1 amps sustained max without readers ¹
Operating Conditions	0° to +50° C; 90% relative humidity, operating (non-condensing)
Battery Backup	Retains RAM memory and real-time clock operation for up to eight hours

Terminal Controller (TC) Modules and I/O Expansion Modules

2-Reader TC Modules	Support two readers with four inputs and four outputs
Capacity	32-bit CPU with storage for 10K buffered events; for 26-bit cards, up to 50K cards with one access level per cardholder or 25K cards with three access levels per cardholder (card type and use of PIN dependent) Access Levels: 256 per TC ² Time Zones: 64 per TC (2 fixed as "never" and "always")
Expansion Input Module	Provides eight user-defined inputs
Expansion Output Module	Provides eight user-defined outputs

Devices

Doors	Each door includes door strike output, door switch input, and request-to-exit input
Readers	Support all standard industry formats, including Performa® and Mirage® proximity readers
Inputs	User-defined dry contact relays with supervision
Outputs	User-defined SPDT dry contact relays, 2A max at 24 VDC or 24 VAC

Cables

Communications	Host to LANLink via Ethernet; on-board 10 Base-T, 100 Base-T, or 10/100 Base-T LAN connection with CAT5 cabling
IP Addresses	Dynamic via DHCP or static via Pinnacle
Readers/Keypads	Shielded five conductor, 18 AWG (500 feet maximum) West Penn 3280
Inputs	Shielded twisted pair, 22 AWG (50 feet maximum) Belden 8761

¹Sustained power consumption breakdown:

Each CPU Module = 325 mA
Each Reader Module = 350 mA
12V Power Converter Module = 70 mA
5V Power Converter Module = 20 mA
LANLink COM Module = 280 mA

²Pinnacle further supports (i) access levels sent to each controller in order of priority, on an as-needed basis, per the capacity stated and (ii) server authorized enhanced assists for cardholder access levels of lower priority

© 2006 – Sielox, LLC
Sielox and Pinnacle are trademarks and Performa and Mirage are registered trademarks of Sielox, LLC.
Certain product names mentioned herein may be trade names and/or registered trademarks of other companies.
Sielox reserves the right to change product specifications.
Rev 03.01.06



LANLink M1200 Backplane Configurations

Base Configurations without I/O Expansion			
	TC Modules	Readers	Inputs / Outputs
2-Reader: LANLink M1200-RC2	1	2	4 / 4
8-Reader: LANLink M1200-RC8	4	8	16 / 16
2-Reader I/O Special: AC-LANLink M1200-RI0	1	2	4 / 4

Total Possible on a Single Backplane					
	TC Modules	I/O Modules	Readers	TC Inputs & Outputs	I/O Expansion Inputs or Outputs
2-Reader: AC-LANLink M1200-RC2	1	0	2	4 / 4	0
plus 3 x LANLink M1200-REK	3	0	6	12 / 12	0
= 8-Reader: LANLink M1200-RC8	4	0	8	16 / 16	0
For above I/O expansion: AC-LANLink M1200-I07	0	7	0	0	56
2-Reader I/O Special: AC-LANLink-RI0	1	4	2	4	32

Accessory modules for use with indicated backplane assemblies: 2-reader Terminal Controllers (TCs), and Input and Output expansion kits

Additional accessories: Power supply options, power regulators, battery kit, enclosure and backplane mounting hardware

Up to two backplanes can be added to a single enclosure; multiple backplanes can be mounted in larger NEMA or Hoffman enclosures

LANLink M1208 Controller Panels (all include battery kit, power regulator(s) and enclosure)

Configurations without I/O Expansion			
	TC Modules	Readers	Inputs / Outputs
2-Reader: AC-LANLink M1208-RC2	1	2	4 / 4
4-Reader: AC-LANLink M1208-RC4	2	4	8 / 8

Configurations with I/O Expansion					
	TC Modules	I/O Modules	Readers	TC Inputs & Outputs	I/O Expansion Inputs or Outputs
2 Reader & I/O Board (I/O Board only for future expansion): AC-LANLink M1208-RI0	1	0	2	4	0
2-Reader & I/Os: AC-LANLink M1208-RI0	1	4	2	4	32

Retrofit configurations available for AC-300 legacy replacements

Accessory modules for use with indicated backplane assemblies: 2-reader Terminal Controllers (TCs), Input and Output expansion kits, and 12V power supply options



Sielox
170 E 9th Ave
Rummede, NJ 08078

800-424-2126 Toll Free
856-939-9300 Phone
856-939-9309 FAX
www.sielox.com