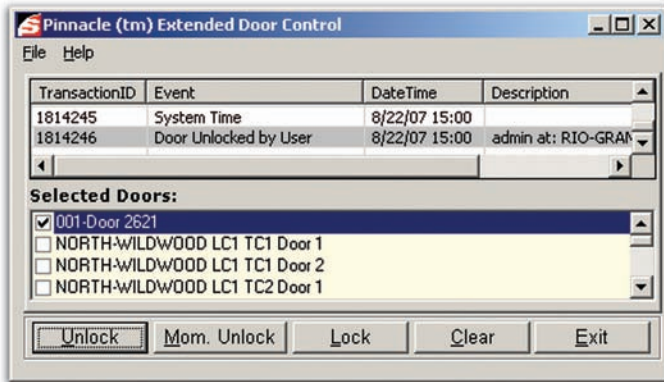


Pinnacle™ Software Development Kit (SDK)

Comprehensive SDK for Cardholder and Real-time Event Communications



Sample Pinnacle Utility

Unlock, lock or temporarily unlock selected doors

Pinnacle™ SDK

The Pinnacle series includes an optional licensed Software Development Kit (SDK) for use in building real-time, standalone applications and front-end controls. The libraries support calls for use by qualified programmers in building utilities for cardholder and real-time event communications.¹

Library calls to create your own GUI:

- Cardholders / Cards
- Filters / Filter Assignments
- User Actions
- Holidays
- APB Zones
- Access Levels
- Groups (device lists)
- Time Zones
- Custom Fields
- Scheduling

Examples of interfaces that could be built with the SDK -

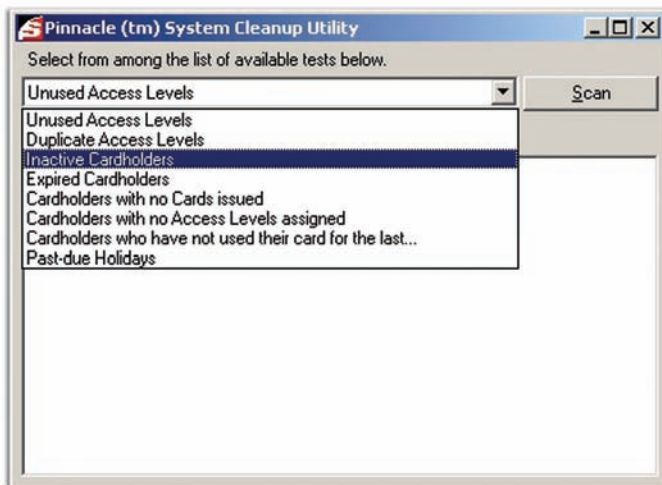
- Add, modify, delete cardholders interacting with HR and databases
- Interface between physical and logical security rules
- Time and attendance 3rd party interfacing
- Visitor management interfacing
- HR and Active Directory database interfacing (and LDAP solutions)
- Creating your own cardholder enrollment screen
- Incorporating a directory path as a custom field in pointing to stored *.wav file or video clip

Implementing existing GUI based controls in your own application:

The Event Grid is designed to manage transactions (non-alarm events) and alarms (tracked events). An Event Grid ActiveX control is available for use in developing SDK based utilities.

Examples incorporating available GUI based controls -

- Activating a camera when a cardholder is at a door
- People counting
- Building management metrics based on traffic flow



Sample Pinnacle Utility

Scan for unused/unnecessary items

SDK Licensing For Qualified Programmers

A software development kit with library calls for developing standalone applications

¹ Qualified programmers for the use of the Pinnacle SDK are defined as ones with standard skills in C++/MFC, Microsoft® Visual Basic® v6.0, Component Object Model (COM), and ActiveX Controls in a Windows® environment.

Pinnacle™ Software Development Kit (SDK)

Used by the Pinnacle team in developing a growing portfolio of utilities:

	Lite	Standard	Plus	Professional
Software Development Kit (SDK) with signed license	N/A	Optional	Optional	Optional

Part #	Description
7145944	SDK licensing for qualified programmers; includes 3 hrs of phone support
7731426	SDK support charge per hour

SDK Use In Developing Your Own Application

In general, there is a basic two-step process in writing an application:

STEP 1: Create a new login to Pinnacle [Reference the “Security Model” of the SDK Manual for more information]

First, reference the following libraries:

CKPUserLib.DLL – Sielox User ActiveX Business Component

AMTCommon.DLL – AMTCommon 1.0 Type Library

Next, add the required classes and modules to the project (found on the Pinnacle CD in the directory labeled VB Modules)

clsBlowFish.cls

clsSDKPrivateKey.cls

modAMTError.bas

Basically, every new object is required to be:

1. Initialized and created
2. Started
3. Manipulated as desired
4. Shut down

STEP 2: Populate Database [Reference the “Business Component” Model of the SDK Manual for more information]

CKPCardholderLib.DLL – Sielox Cardholder ActiveX Business Component

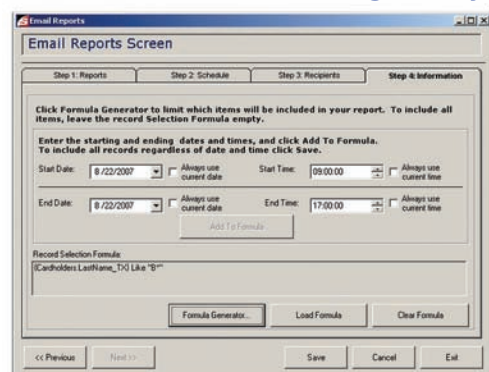
CKPCustomFieldLib.DLL – Sielox Custom Field ActiveX Business Component

CKPGuiCommonLib.DLL – Sielox GUI Common ActiveX Business Component Documented in Section II

Note: Not for SDK development use -

- Changes to existing GUI screens
- Creating users or changing permissions
- Custom event / array set-ups

Sielox Also Offers a Growing Library of Standalone Application Utilities Built With Pinnacle’s SDK



Sample Pinnacle Utility

Schedule report generation with direct emailing

EventLink: Cardholder’s image displayed with a corresponding reader event

Administration Management: Scan for unused/unnecessary items

Door Icon and Extended Door Control: Unlock, lock or temporarily unlock selected doors

Event Counter: Increment and decrement a counter based on user-defined events

First Person Rule / Occupancy Restrictions: Set occupancy rules based on count, time, and cardholder use

Independent Report Processor: Execute reports for pre-configured templates and formulas

Email Report Scheduler: Schedule report generation with direct emailing



170 East Ninth Avenue • Runnemede, NJ • 08078

For Sales & Marketing, Customer Service, Technical Support or Training Call:
(856) 939-9300 • Toll Free: (800) 424-2126 • Fax: (856) 939-9309 • www.sielox.com