

Pinnacle - Aegis2

Graphical Command and Control Integration Software

Powered by KapLogic



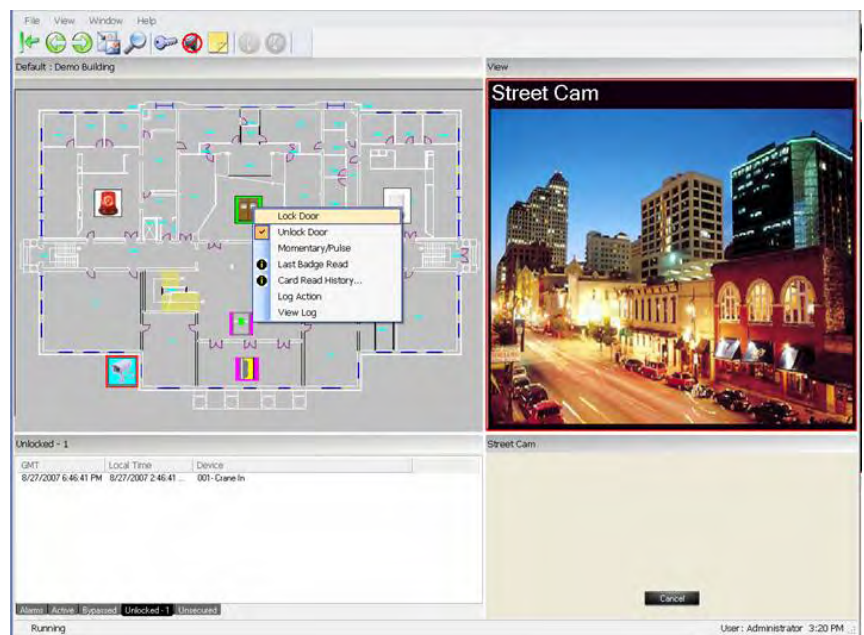
Superb Facility Awareness - The operator has real-time status of all security subsystems being monitored. This is assured through a visual presentation of the facility that uses graphics such as maps, photos and floor plans including AutoCAD drawings in their native format (no need to convert or import AutoCAD maps). Easily understood icons are used to represent and control all subsystem devices. Icon status (designated colors, flashing, etc.) communicates the real-time status of each device. Device control is provided by point-and-click.

True Real-Time Integration - Allows diverse security subsystems - access control, CCTV, alarm, intercom and other systems to be integrated into one easy-to-use system, controlled on individual workstations through a single graphical user interface.

Multiple Database Support - Aegis supports ANSI SQL compliant databases including Microsoft SQL, SQL Express, Oracle and mySQL.

Operator Response Time & Errors are Minimized - Event driven macros allow global linking between various systems to automate alarm response. When an alarm is triggered, Aegis can lock doors, activate a camera to a preset, start a DVR to record, open a talk path and show with a flashing red icon the location of the event on a facility map. With point-and-click functionality the operator has the ability to arm/disarm alarms, lock/unlock doors, and view video.

Installation Time Is Reduced - Eliminates the need to hardwire equipment together. You install each subsystem as a stand-alone and connect them to Aegis via the network. Aegis will link the subsystems together and provide command and control functionality.



Real-Time Status Display - The status of each device is clearly conveyed by icon color and text display. Complete system status is shown in the device status lists. Alarm priority colors are used to cause the text in the status list to change to a specified color to provide for easy identification of alarm priority levels.

Advanced Alarm Handling - 32 alarm priorities are provided allowing security officers to respond to alarms in priority order. Subsystems can override default alarm priorities in duress or emergency conditions.

Pinnacle - Aegis2

Graphical Command and Control Integration Software

Powered by KapLogic

User Privileges and Partitioning - Control, alarm acknowledgement and alarm bypass privileges of each device (icon) is assigned through User Groups. Privileges follow users when they log in at different workstations, or can be configured independently for each workstation.

Advanced Permissions - Each user can have specific and unique privileges assigned that are in addition to the privileges of the user group.

Scheduling - Administrator can allow or deny access to system resources based on a schedule. For example, you can limit when a user can log into the system. You can also limit when a user can view or control an icon.

Authentication Options - "Integrated Windows Authentication", "Aegis Authentication" or both.

Modular Architecture - Subsystem drivers are written specifically for each subsystem. Setup is intuitive and specific to the subsystem being interfaced. Features available in the subsystem are accessed through Aegis (if supported by the subsystem).

.Net Framework - The .Net architecture of Aegis2 means up-to-date technology for compatibility with present and future Windows operating systems. The .Net framework reduces driver development time.

Simplified Driver Setup - All connections to subsystem devices can be configured from the workstation in one setup dialog box.

Comprehensive Logging - Events can be both automatically and manually logged.

Secure Networking - TCP/IP networking allows for operation on LAN or WAN networks. All data transmission is encrypted for security.

Multiple Views of Individual Maps - When multiple map views are needed only a single map file is used.

Maps Resize On Command - With CAD drawings the operator can zoom in/out and scroll left/right and up/down, giving the operator greater control of the map view.

Flexible Window Configuration - Aegis2 allows the operator to view up to four monitors with flexible window configuration on each monitor. Each monitor can host live video, looping prerecorded video, device status, a website, documents, files, etc.



170 East Ninth Avenue · Runnemede, NJ · 08078

For Sales & Marketing, Customer Service, Technical Support or Training Call:
(856) 939-9300 · Toll Free: (800) 424-2126 · Fax: (856) 939-9309 · www.sielox.com

© 2006 - 2007 - Sielox, LLC. Sielox and Pinnacle are trademarks of Sielox, LLC. Certain product names mentioned herein may be trade names and/or registered trademarks of other companies. Rev 11.01.07