



Access

Video

Software

Technology



## Pinnacle™

Covering Your Access Control Security from Start to Finish



### The Definitive Security Solution

Sielox has been a leader in access control since 1979. Introduced in 2003, Pinnacle's set of core features, complete compatibility with Sielox 32-bit controllers, and seamless integration with products from renowned partners, all give you an unmatched and growing resource for advanced system design.

### Scalable from Entry Level to Enterprise

Pinnacle is Sielox's next-generation, feature-rich event management system. Now you can have greater control over your company's security, whether for a small office or a building campus with multiple access security points. Pinnacle systems are available in five configurations – Ultra, Lite, Standard, Plus, and Professional - providing you the ideal match for your access control needs today, with scalability to meet future growth.



### Pinnacle Single Sign-On

Single Sign-On allows Pinnacle to be launched via Windows Account Authentication. Pinnacle now offers Windows Authentication in addition to the Legacy Authentication (Pinnacle Login). In Windows Authentication mode, Pinnacle will use a Windows Account mapped to a Pinnacle Account to either start Pinnacle with no login (Windows Authentication), present a Legacy Pinnacle Login screen, block the user, or give the user the ability to choose either a Pinnacle or Windows Login (Mixed Mode).



### Software Key Licensing

Capable of working in a virtual environment.

### Elevator Control

Pinnacle supports traditional hardwired interfaces as well as smart elevator destination dispatch interfaces.

### Video Integration

Pinnacle Argos™ is a Web based application that integrates Pinnacle events to CCTV devices, utilizing the Costar line of DVR's. It can be deployed from any computer on the network running Microsoft Internet Explorer Web browser. Pinnacle Argos does not require seat licenses.



Using Pinnacle access, alarms and other events (Filters and Filters Assignment) you can call up a camera on the Argos monitor screen, record video, and call up presets on a PAN-TILT-ZOOM camera. Pinnacle Argos™ allows multiple DVR's to be added to the system.

Pinnacle Argos™ is available with Pinnacle version 7 and later as a standard feature allowing the control of 32 cameras. Upgrade to 64, 128 or unlimited cameras.

### Web Clients

Pinnacle is now web enabled, manage and monitor you system from anywhere. Pinnacle Web is a server based application that enables Pinnacle applications to run on a web browser on the network or internet. Pinnacle Web transmissions are fully encrypted using Secure Socket Layer (SSL) technology. What's more, your applications and mission-critical data remain secure on the server behind your corporate firewall. Upgrades are made at the server; there is no need to upgrade workstation software.



- System developed and manufactured entirely by Sielox
- Intuitive GUI simplifies set-up, training, and operation
- Enables multiple passwords and permissions per user
- Simultaneous security coverage of separately defined regions
- SQL database ensures IT compatibility and modular development

### Security System Administration and Control

Pinnacle puts the cardholder first. During set-up, cardholders can be assigned a variety of access levels and multiple cards, with Pinnacle supporting an unlimited number of badge formats. Libraries of up to nine images per card record can also be built. Card history data can be archived for future variations. Devices are easily configured, set up, and operated. An overall display of your security network is available via the Pinnacle event monitor, with four window views for unequaled control flexibility. A wide range of event filters manage the display and provide alarm notifications via “pop-up”, e-mail and “\*.wav” settings.

### SQL Database Management and System Partitioning

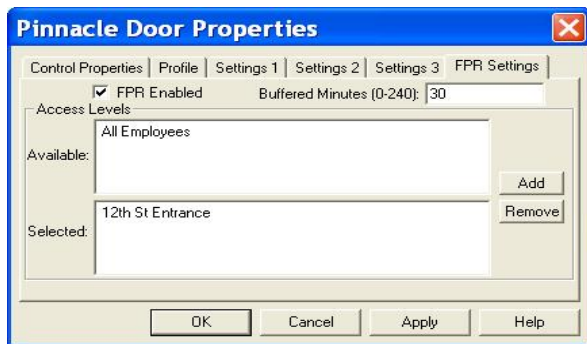
Pinnacle uses a Microsoft® SQL Server to ensure IT compatibility and ease of management. Database partitioning is also offered as an option, allowing a single Pinnacle System to be divided into smaller independent operations. Central administration and shared devices are both fully supported. By leveraging today’s technology, Pinnacle works with the latest operating systems, and provides the stability required of any access control system.

### System Integration with Sielox Controllers

Pinnacle works seamlessly with Sielox’s newest 32-bit controllers, enabling flexible and cost-effective designs. Legacy 16-bit and 8-bit controllers are also supported ... no controller left behind! Advanced set-up also supports distributed architecture, allowing the use of multiple hardware controllers for improved communications efficiency.

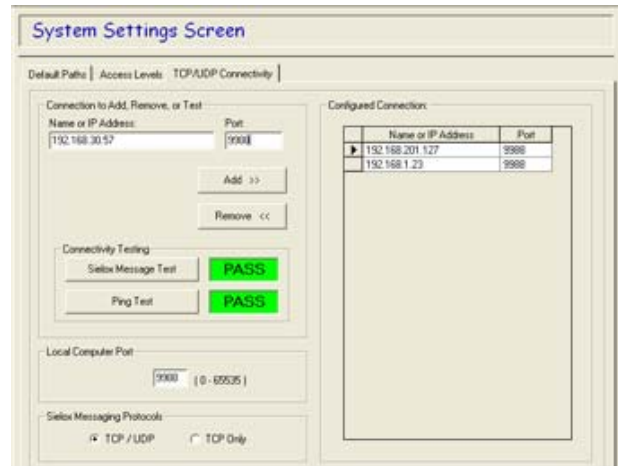
### First Person Rule (Snow Day)

Any door scheduled to be unlocked via Time Zone, will not do so until an authorized cardholder is admitted prior to the unlock schedule.



### System Network Setup Tool (TCP / UDP Switch)

This new enhanced network tool helps setup Pinnacle workstations and IP Tunneling table. Includes OS Ping and Sielox Message ping tools.



### Photo ID Badging

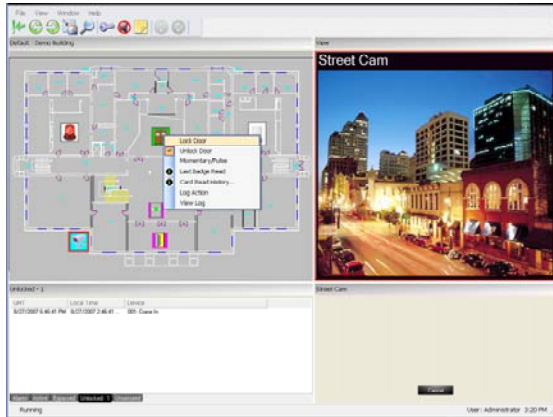
Pinnacle supports all TWAIN and WinTab devices, simplifying image capture and badge creation. Simple on-screen editing features include color, brightness, and contrast control, along with image cropping and red-eye removal.



170 East Ninth Avenue, Runnemede, NJ 08078 | 856-939-9300 | Toll free: 800-424-2126 | Fax: 856-939-9309 | info@sielox.com

[www.sielox.com](http://www.sielox.com)

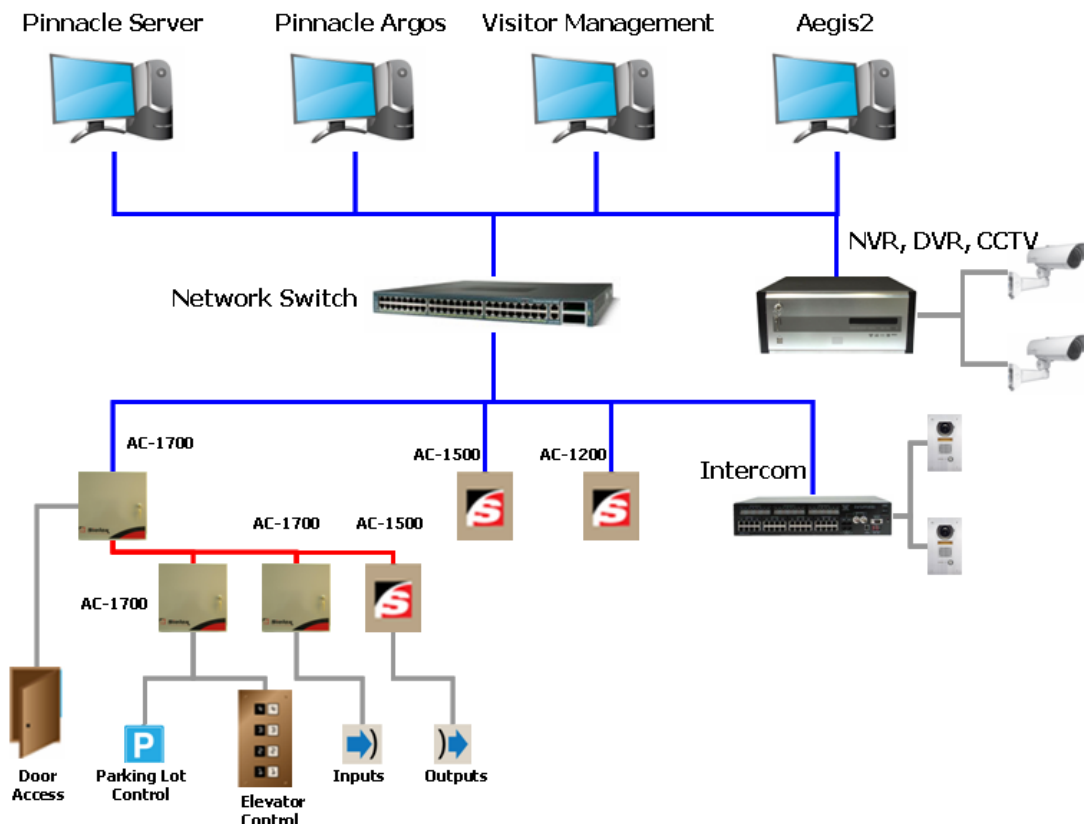
## Graphical Mapping & Video Integration - *Aegis2*



*Aegis2* is Sielox's cutting edge graphical command and control integration software. It can be installed on the same computer with Pinnacle or separately. It supports multiple workstations. Create your maps from existing AutoCAD, JPEG, BMP, and many other file formats. Drag and drop cameras, intercoms, doors, readers, inputs and outputs and more to a map and control them with a mouse click. Events can pop-up video on the screen and start DVR recording.

*Aegis2* integrates with most of the major NVR, DVR, CCTV, intercom and serial alarm devices.

## Sielox System Architecture



**Sielox has a flexible architecture that allows Pinnacle and *Aegis2* to run on a single computer or on multiple computers and workstations across the network.**

170 East Ninth Avenue, Runnemede, NJ 08078 | 856-939-9300 | Toll free: 800-424-2126 | Fax: 856-939-9309 | [info@sielox.com](mailto:info@sielox.com)



# Pinnacle™

**Pinnacle™ Software Series** – Open, Modular, Scalable, Intuitive.  
Pinnacle meets the demands for more precise control, greater flexibility, and enhanced security for facilities ranging in size from a small office with a single entrance to a building campus with multiple entry points.

	Ultra	Lite	Standard	Plus	Pro
Number of Online Readers <sup>1</sup>	8	32	64	128	Unlimited
Number of Cards	500	2,000	4,000	10,000	Unlimited
Client Workstations-Rich and Web	Single User	Single User	1 to Unlimited	1 to Unlimited	1 to Unlimited
Pinnacle Argos - Number of cameras <sup>2</sup>	N/A	32	32	32	32
Addressable Controllers	4	16	32	64	Unlimited
Time Zones <sup>3</sup>	Unlimited	Unlimited	Unlimited	Unlimited	Unlimited
Total Access Levels <sup>4</sup>	Unlimited	Unlimited	Unlimited	Unlimited	Unlimited
Individual Expiring Access Levels per Cardholder <sup>5</sup>	99	99	99	99	99
Number of Cardholder Custom Fields	Unlimited	Unlimited	Unlimited	Unlimited	Unlimited
Alarm Levels (with advanced alarm notification)	99	99	99	99	99
Holidays	32	32	32	32	32
Microsoft SQL Server 2000 Desktop Edition	Included	Included	Included	Included	Included
User Privileges	Included	Included	Included	Included	Included
First Person Rule (Snow Day)	Included	Included	Included	Included	Included
Event Filtering (w/ email support)	Included	Included	Included	Included	Included
Local, Regional, and Global I/O Links <sup>6</sup>	Included	Included	Included	Included	Included
Hardware COM Server Licensing <sup>7</sup> (Multi-Hardware Server support w/Universal I/O linking)	N/A	N/A	N/A	N/A	Optional
Access Level Input and Output Control	Included	Included	Included	Included	Included
Multiple Card Formats	Included	Included	Included	Included	Included
System Reminders	Included	Included	Included	Included	Included
Scheduler (for recurring functions)	Included	Included	Included	Included	Included
Remote Dial-up	Included	Included	Included	Included	Included
Standard Reports	Included	Included	Included	Included	Included
Database Partitioning	N/A	N/A	Optional	Optional	Optional
Custom Report License <sup>8</sup> (with use of Crystal Reports)	N/A	N/A	Optional	Optional	Included
Photo ID Badging <sup>9</sup>	N/A	Optional	Optional	Optional	Optional
Pinnacle Data Exchange	N/A	Optional	Optional	Optional	Optional
Visitor Management (STOPWare™ or EasyLobby SVM™)	N/A	Optional	Optional	Optional	Optional
Aegis2 - Graphical command and control integration software	N/A	N/A	Optional	Optional	Optional
CCTV, DVR, Intercom and Serial Alarm	N/A	N/A	Optional	Optional	Optional
Software Dev. Kit (SDK)		N/A	Optional	Optional	Optional
Smart Elevator Interface-ThyssenKrupp/Schindler	N/A	N/A	Optional	Optional	Optional

<sup>1</sup>The starting recommendation for LANLink is to limit the number of readers to 512 per Hardware COM Server (equivalent to 256 TC modules per Hardware COM Server); 16 or less Main Controllers should be the target limit per COM port

<sup>2</sup>Pinnacle Argos comes with 32 cameras, upgradeable to: Standard - 64, Plus - 128, Pro - unlimited cameras

<sup>3</sup>Although Pinnacle supports unlimited Time Zone assignments, 16-bit and 32-bit controller storage limits Time Zones to 64 per TC module (2 fixed as "never" and "always")

<sup>4</sup>Although Pinnacle supports unlimited total Access Levels, each TC module is limited to 256 total access levels (also see individual cardholder limitations below)

<sup>5</sup>Pinnacle supports 99 individually expiring Access Levels per cardholder with up to three per cardholders sent to respective TC modules in order of set priority for each cardholder; server authorized enhanced assists are initiated for cardholder Access Levels of lower priority

<sup>6</sup>Local = I/O linking within the same TC module; Regional = I/O linking within the same AC-1700/AC-900 Main Controller (not applicable with LANLink controllers); Global = I/O linking across AC-1700/AC-900 Main and/or LANLink Controllers within the same server

<sup>7</sup>Hardware COM Server (Multi-Hardware Server) architecture supports Universal I/O linking across hardware servers

<sup>8</sup>Crystal Reports not included

<sup>9</sup>Licensing varies with different Pinnacle levels

**\*Notes**

- Certain Pinnacle screens, such as the device tree, requires MS Paint to be resident on your computer (included with Windows).
- Actual requirements may vary; increasing memory and processor speed has been found to improve performance.
- Specifications and availability are subject to change without notice.
- When installing Aegis2 and Pinnacle on the same computer 2 GB of RAM is required for Pinnacle Lite and Standard and 4 GB for Pinnacle Plus and Professional.

170 East Ninth Avenue, Runnemede, NJ 08078 | 856-939-9300 | Toll free: 800-424-2126 | Fax: 856-939-9309 | info@sielox.com

[www.sielox.com](http://www.sielox.com)

**Standalone Application Utilities Built with Pinnacle's SDK**  
Event Link: Cardholder's image displayed with a corresponding reader event  
Administration Management: Scan for unused/unnecessary items

**Library I/User Interface Utilities (Included)**  
Door Icon and Extended Door Control: Unlock, lock or temporarily unlock selected doors

**Library II/Functional Utilities (Included)**  
Event Counter: Increment and decrement a counter based on user-defined event  
n-Man Rule / Occupancy Restrictions: Set occupancy rules based on count, time, and cardholder use  
Independent Report Processor: Execute reports for pre-configured templates and formulas  
Email Report Scheduler: Schedule Pinnacle report generation with direct emailing.

**Minimum Requirements:  
Pinnacle Server and Client Workstations**

Operating System (OS Not Included) **Ultra, Lite, Standard, Plus, Professional**  
32-bit Windows OS: XP Professional, Server 2003 Standard, Vista Business, Server 2008 Standard, Windows 7 Professional  
64-bit Windows OS: Windows 7 Professional & Server 2008 R2 Standard.  
**(Note! 32 bit Windows 7 Professional is not supported with any version of Pinnacle Web)**

Database Engine Guidelines (MSDE Included) **Ultra, Lite, Standard and Plus:**  
Greater than 128 readers OR 10,000 cardholders OR 5,000 events per hour OR 4 client workstations OR database partitioning requires the use of MS SQL Server 2000, 2005 or 2008 Standard or Enterprise editions or SQL Express (not included)  
**Professional:**  
MS SQL Server 2000, 2005 or 2008 Standard or Enterprise required (not included); MSDE Desktop Edition is included.

Free Hard Disk Space 1 GB hard disk space

Processor / Memory (\*see notes)

Client		
	Processor	Memory
Ultra	N/A	N/A
Lite	N/A	N/A
Standard	Pentium 4-3.8 GHz	1GB
Plus	Pentium 4-3.8 GHz	2GB
Professional	Pentium 4-3.8 GHz	2GB
Server		
Ultra	Pentium 4-3.8 GHz	2GB
Lite	Pentium 4-3.8 GHz	2GB
Standard	Pentium Dual Core T4400 @2.2 GHz	2GB
Plus	Pentium Dual Core T4400 @2.2 GHz	4GB
Professional	Pentium Dual Core T4400 @2.2 GHz	4GB

CD-ROM	10X or higher
Monitor/Video	17" SVGA (1024 x 768)
Network Card	10/100 Base-T
Mouse	PS/2, USB, or Serial bus type
Ports	4 USB or 2 serial and 1 parallel
Modem	V.92, V.90, V.34 or V.32